

# EDH Chamber of Commerce Redistricting Alternative

## County of El Dorado

### State of California

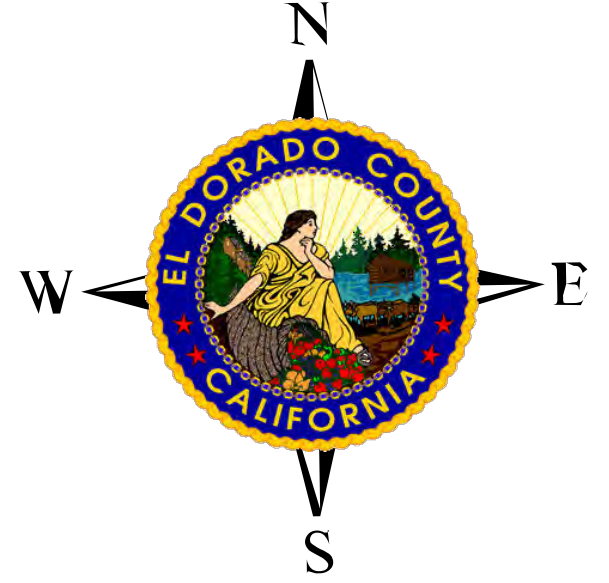
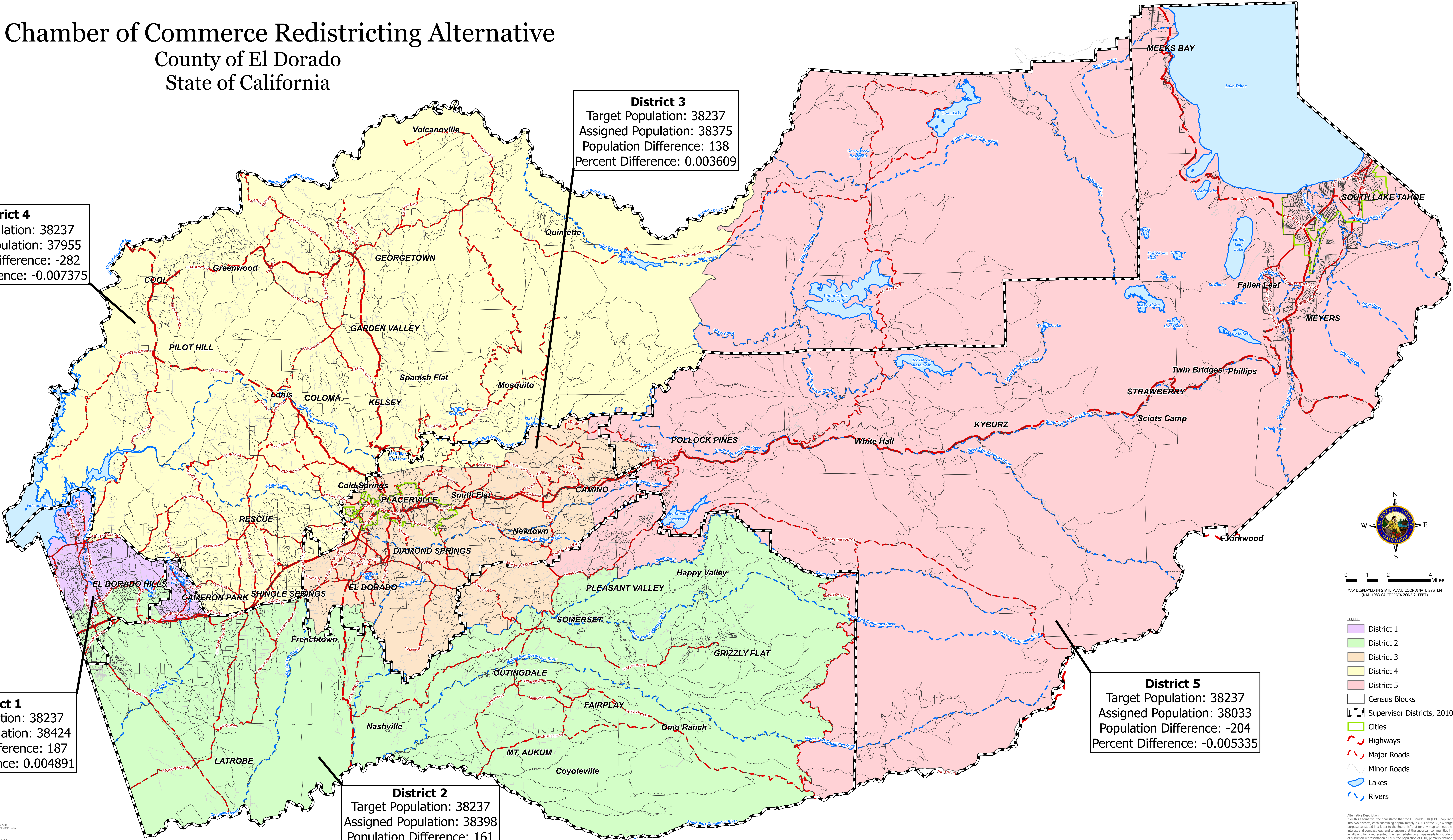
**District 4**  
Target Population: 38237  
Assigned Population: 37955  
Population Difference: -282  
Percent Difference: -0.007375

**District 3**  
Target Population: 38237  
Assigned Population: 38375  
Population Difference: 138  
Percent Difference: 0.003609

**District 1**  
Target Population: 38237  
Assigned Population: 38424  
Population Difference: 187  
Percent Difference: 0.004891

**District 2**  
Target Population: 38237  
Assigned Population: 38398  
Population Difference: 161  
Percent Difference: 0.00421

**District 5**  
Target Population: 38237  
Assigned Population: 38033  
Population Difference: -204  
Percent Difference: -0.005335



0 1 2 4 Miles  
MAP DISPLAYED IN STATE PLANE COORDINATE SYSTEM  
(NAD 1983 CALIFORNIA ZONE 2, FEET)

- Legend
- District 1
  - District 2
  - District 3
  - District 4
  - District 5
  - Census Blocks
  - Supervisor Districts, 2010
  - Cities
  - Highways
  - Major Roads
  - Minor Roads
  - Lakes
  - Rivers

Alternative Description:  
For this alternative, the goal stated that the El Dorado Hills (EDH) population should be divided into two districts, each containing approximately 23,303 of the 38,237 target population. The purpose, as stated in a letter to the Board, is "that for any map to meet the mandates of common interest and cooperation, and to ensure that the suburban communities in the Western slope are legally and fairly represented, the new redistricting maps needs to include two districts with majority of suburban representation." Thus, the population of EDH, currently defined by the 95076 ZIP code, was split into two approximately equal parts. Half was assigned to District 1 and half to District 2. City boundaries, rural centers, and zip codes were also used as references to assign Pleasanton to District 3, the northern population to District 4, and South Lake Tahoe and the El Dorado National Forest to District 5. This alternative was requested by the El Dorado Hills Chamber of Commerce.

DISCLAIMER:  
THIS DISTRICTING MAP WAS COMPILED FROM UNOFFICIAL PUBLIC AND PRIVATE SOURCES AND IS ILLUSTRATIVE ONLY. NO REPRESENTATION IS MADE AS TO ACCURACY OF THIS DISTRICTING MAP. MAKE YOUR OWN VERIFICATION OF THIS DISTRICTING MAP.  
NOTES:  
1. MAP INFORMATION MAY COVER ADDITIONAL AREAS OUTSIDE OF THE DISPLAYED AREA.  
2. MAP PREPARED BY: El Dorado County GIS Unit, 10/27/2023.  
3. MAP PROJECT ID: 2023040501 - RELATED REPORT: N/A  
4. EL DORADO COUNTY SUPERVISORS DIVISION  
5. PHONE: (925) 424-5446 | www.elcogov.org