

ANNUAL MEMBERSHIP & BENEFITS

CONNECTOR \$327 NON-PROFIT \$225

- 2 Listings in print Business Directory & Relocation Guide (alpha & category)
- Website access to directory listing with link
- Opportunity to attend/host Networking Events
- Opportunity to attend/sponsor all Signature Events
- Job Board
- Pro-Business Advocacy on local & state issues
- Opportunity in Welcome Bag Program
- Eligibility to serve on all committees: GRC, Board of Directors, Ambassador, ELDO Young Professionals
- Access to seminars and training classes
- Bulk mail permit access
- Member plaque
- Chamber lobby business card display
- Member-only referrals
- Member2Member and/or general public coupons/discounts
- Subscription to Chamber e-News
- Right to use Chamber logo for marketing, advertising, and promotions

CATALYST \$716

- Includes all of the above AND
- Admission for One to All Lunches
- Company logo and hyperlink included in online Business Directory listing
- Map link in online Business Directory
- Brochure in California Welcome Center

CONVENER \$2,605

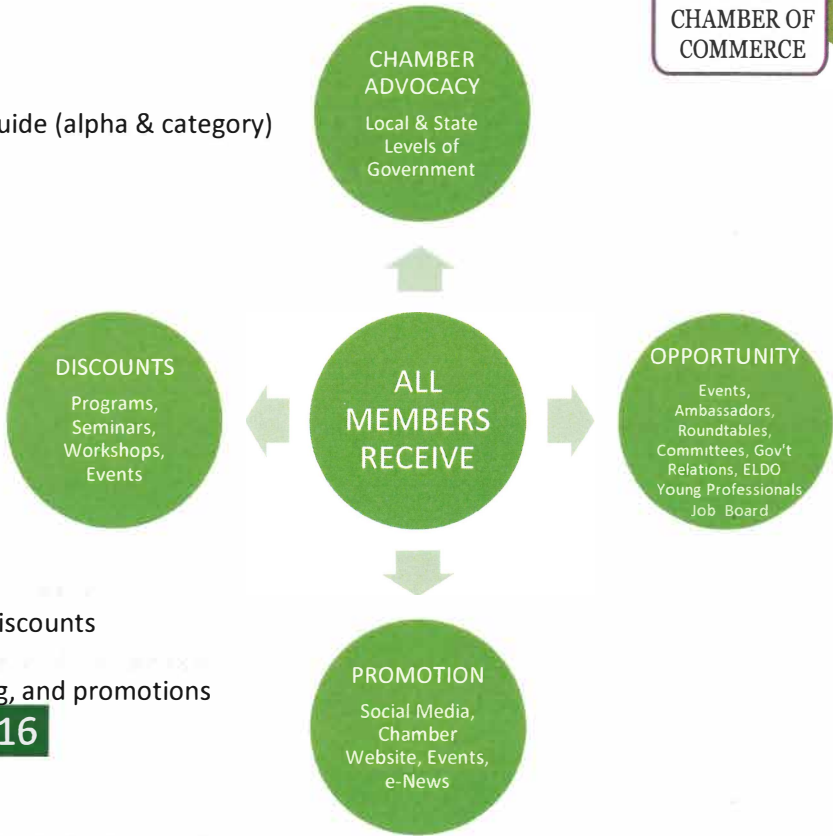
- Includes all of the above AND
- Art, Beer & Wine Festival Waterfront Space
- Business Builder Buffet Luncheon Sponsor
- Biz Walk Sponsor
- e-News Sponsor
- Multiple and bold online Business Directory listings
- Website Sponsor

PREMIER PARTNER \$7,500

- Our prestigious packages offer the highest visibility in the Chamber
- Please contact President & CEO for more information
- PP/PP+ not part of progressive tiers

PREMIER PARTNER PLUS \$10,000

- Includes the Premier Partner advantages
- Kiosk and brochures in the El Dorado Hills California Welcome Center
- Featured link on Chamber website
- Please contact President & CEO for more information.



The Schapiro Group conducted a national study that revealed being active in local chambers of commerce is an effective business strategy because it communicates to consumers that a company uses good business practices, is reputable, cares about its customers, and is involved in its community. Consumers are 63% more likely to buy from Chamber Members.